

SWAP series product codes

AUTO-OFF timers

SWAP01
SWAP01E
SWAP02
SWAP02E



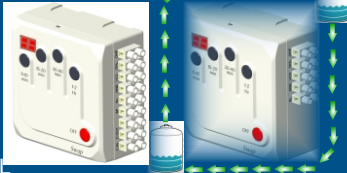
Cyclic timer

SWAP03C
SWAP03AC
SWAP03ACF
SWAP03ACF-SA



Automatic Flow & Level controllers

SWAP04-OL
SWAP04-OLF
SWAP04-C-OL
SWAP04-C-OLF
SWAP04-SOL
SWAP04-C-SOL
SWAP04-OF
SWAP04-SMFL
SWAP04-C-SOFL



SWAP Features & benefits!

- Saves water and power**
- Simple 8 different time/cycle sections- No setting.
- Each button with two time/cycle selections - just press for the first selection, press and hold for the second time selection.
- LED Display indications for current device operation.
- Easy to operate by everyone.**
- Universal contact, suitable for both AC and DC** in multiple applications.
- Automatic resumption** and execution of remaining time/cycle in case of a power interruption.
- Two-in-one device - Automated level controller & Auto OFF Timer.
- Tested according to IS/IEC 60669-2.
- Operating voltage ranges from 85V to 305V(AC)
- Micro USB socket for backup device control.
- Offers Surge Voltage protection above 350V.
- Stay safe(Never get electric shock)!** our sensors uses extremely isolated low voltage for sensing.
- Compact design-** suits for 2 module box(25mm).
- Suits for 3phase power supply(derating applicable)**

Product wise features

Auto OFF Timers

- Available time selections in SWAP 01/01E- **5-10,15-20,30-40 min & 1-2hr**
- Available time selections in SWAP 02/02E- **2-4,5-6,7-8,10-12 Hours**
- Auto-execution of the remaining time(with 3sec. delay) in case of power interruption- feature available in SWAP01E/02E only
- SWAP01/02 - **Suitable for extreme switching surge voltage zone.**



Cyclic Timers

Available Cycles for selection - SWAP03C

Cycle	L1	L2	E1	E2	A1	A2	F1	F2
ON Hrs	0:05	0:15	0:30	4:00	5:00	6:00	12:00	13:00
OFF Hrs	1:00	1:00	1:30	20:00	19:00	18:00	12:00	11:00

Available Cycles for selection - SWAP03AC/ACF-SA

Default initial ON time : 30 minutes

Cycle	L1	L2	E1	E2	A1	A2	F1	F2
ON min	20	25	30	40	40	50	60	ON
OFF min	15	10	10	15	25	10	15	

- Power interruption won't be a problem as this category of products has an automatic cycle resumption feature.
- SWAP04ACF for AC and Ceiling fan control options.
- SWAP04 ACF SA with add-ons alarm & Smoke detector.

Automatic level and flow controllers

- By default all products are Automated controller except SWAP04-OF
- In case of emergency can be used as Auto OFF Timer.
- SWAP04-C-SOFL/SMFL: Corporation water flow detector.
- SWAP04-OLF/C-SOFL/SMFL: **Dry run protection.**
- SWAP04-OL/OLF/SOL/C-SOFL/C-SOL/C-OL: Level controllers (call or email us to know your product code)
- SWAP04-OF: **Overflow controller**(semi automatic product)
- SWAP04- C-SOFL/C-SOL/C-OL: **Submersible pump controllers** with auto start capacitor enabled for 3seconds.

Contact details

Mobile/whatsapp: +91-9629900110, 9443410073

For Connection details

Please ref backside/whatsapp for more.

E-Mail address

info@eviqds.com

website address

www.eviqds.com

Applications

Auto OFF Timers

- SWAP01/01E - **Water pumps, Geysers(water heater)**
- SWAP02/02E-
 - EV Battery & Lead acid battery charging socket.
 - Water pumps in multi storey apartments
 - Signboard, Street Lighting, and Compound Lighting



Cyclic Timers

- SWAP03C
 - For water pump(1/3-Phase) in arid regions.
 - Signboard, Street, & Compound Lights.
 - Dairy and Agriculture farm control equipments.
- SWAP03AC / ACF / ACF-SA
 - Air conditioners** & Old refrigerators- SWAP03AC
 - AC and Ceiling fan control**-SWAP03ACF
 - Life saving add ons - alarm with smoke detector.

Automatic level and flow controllers

- Overhead tank and sump **tank level controls.**
- Corporation/Gov./sump water flow detection.**
- Over flow controller.
- Submersible pump level controllers.

Call or email us to know your suitable products

Product details



Made by
EVIQ Design Solutions

Description Specification

Rated Voltage	250V@AC / 30V@DC
Rated Current	16AX@AC / 20A@DC
Allowable Load	2HP/3kW
Conforms to	IS/IEC 60669-2
Suitable box	2 Module/1Gang
Warranty	1 Year
Size	87x87x38 mm

Test details IS/IEC 60669-2

IEC 60669-2-1:2021

Switches for household and similar fixed electrical installations - Part 2-1: Particular requirements - Electronic control devices



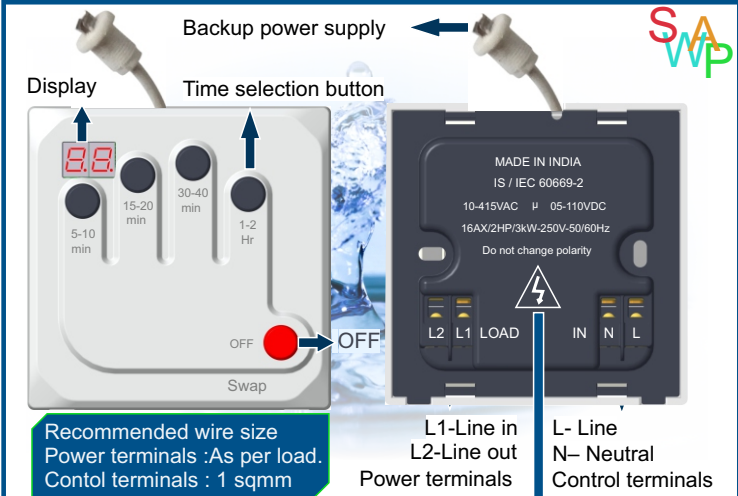
CETL- Kakkalur

Authorised Distributor

UPI-Payments



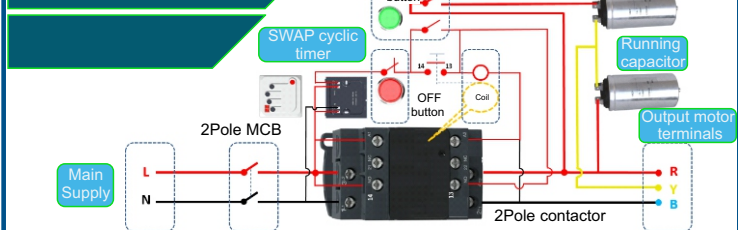
Know your connection / Auto-off timer



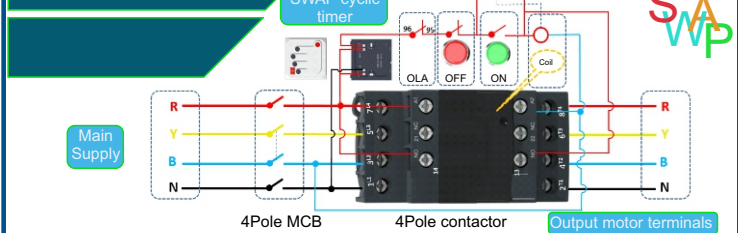
Lighting/motor connection



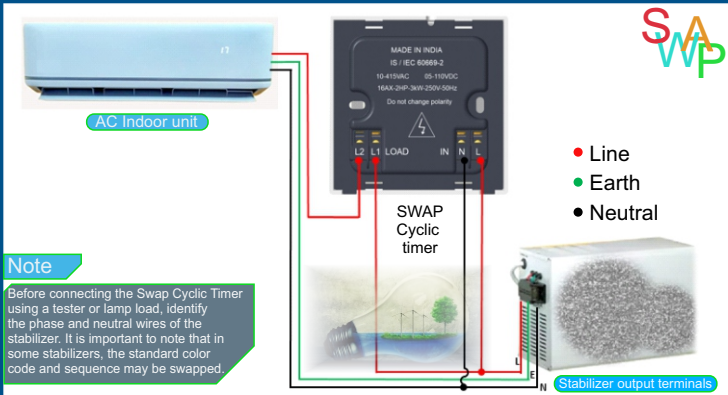
Single phase starter



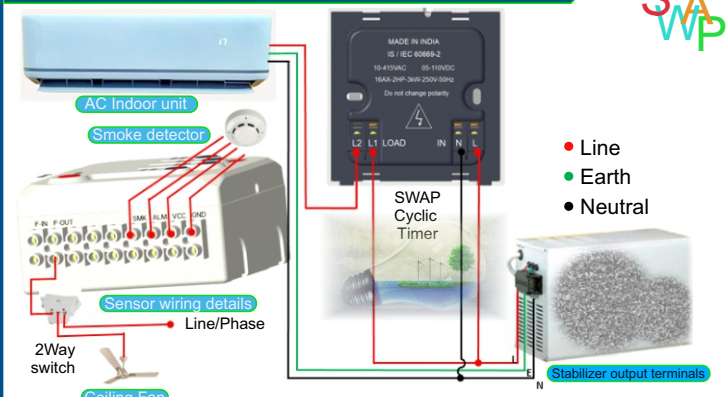
Three phase starter



Know your connection / Cyclic timer



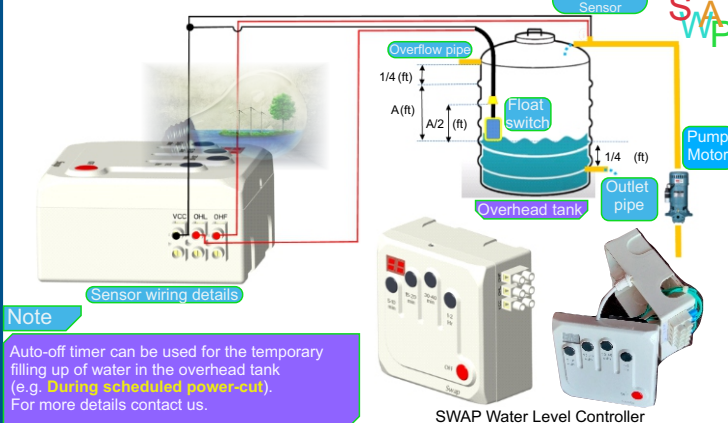
SWAP03-ACF SA



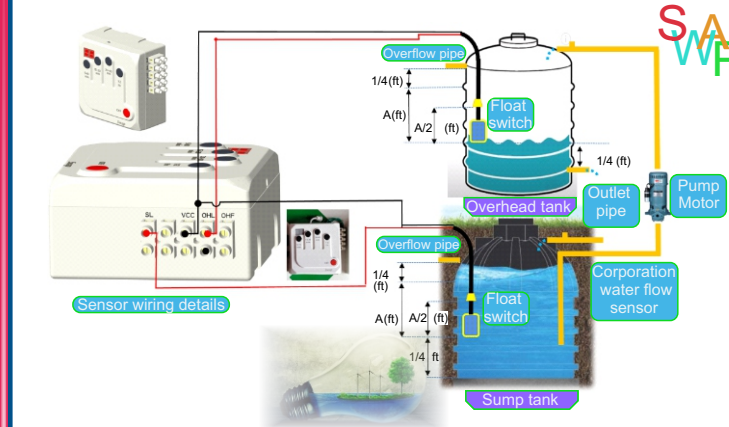
Level & flow controllers

Motor wiring details

Sensor wiring details

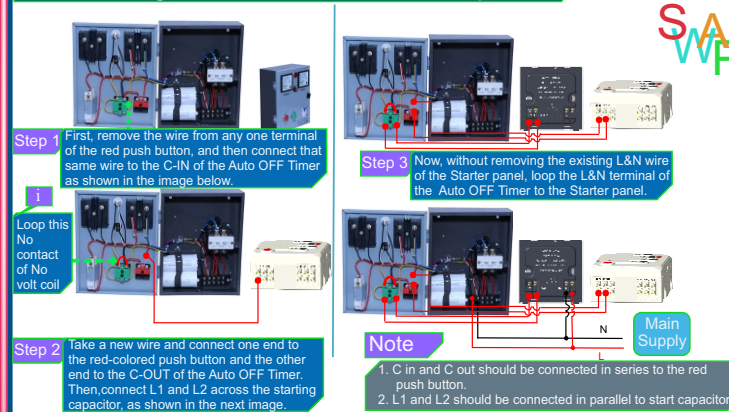


Level & flow controllers / SWAP04-SOL



Level & flow controllers / SWAP04-C-OL/OLF / SWAP04-C-SOL/SOLF

Starter wiring details for self start with capacitor



Level & flow controllers / SWAP04-SOLF

